

EntraPass™ Special Edition

Highly Reliable Single Workstation Access Control System

Operator Friendly

Based on user privileges, operators can define or modify parameters (i.e. schedules or access levels), generate reports, or activate controlled devices (i.e. locking/unlocking doors, or activating relays for lighting or air conditioning). Plus with the embedded Vocabulary Editor, users are able to translate operations into almost 100 different languages.

Express Setup

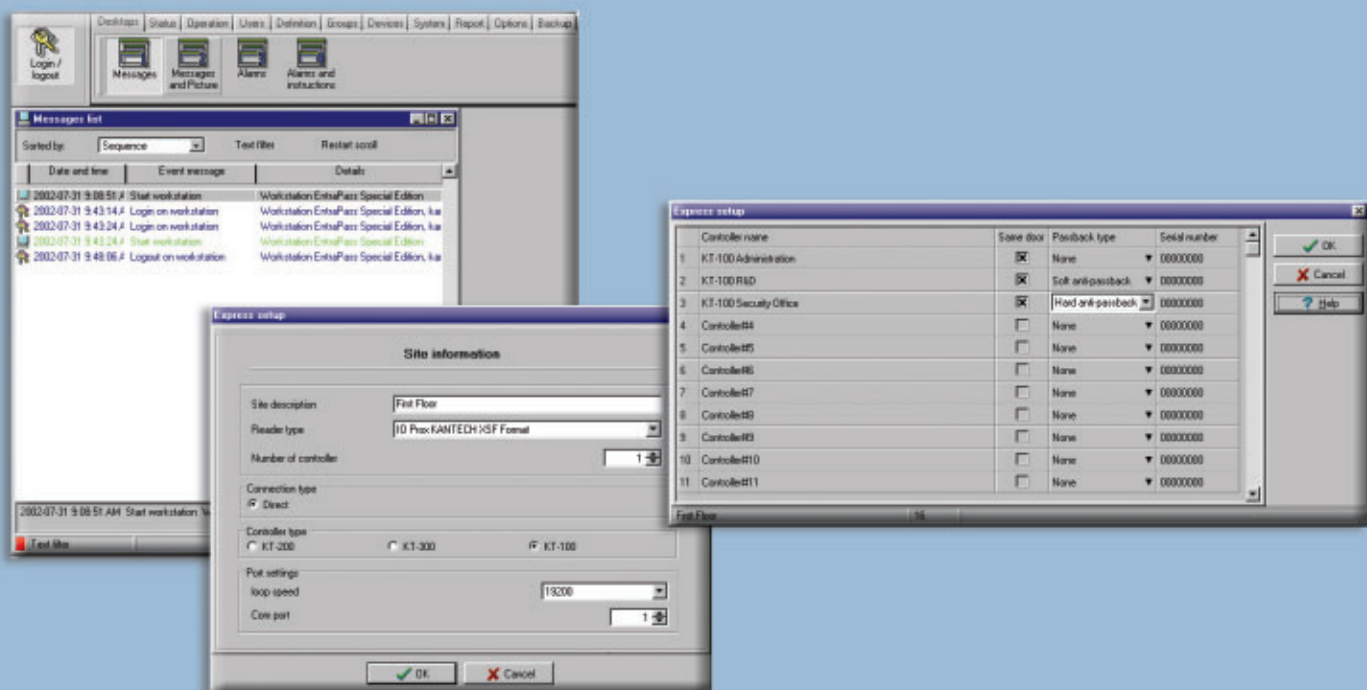
Express Setup will automatically define all the necessary system components. This innovative feature reduces the time required to configure the system and eliminates programming errors.

Simple to Upgrade and Expand

EntraPass Special Edition controls up to 128 doors and easily expands to an unlimited number of users. The Special Edition software is compatible with Kantech's complete line of controllers which provides system flexibility.

Network Ready

The EntraPass Special Edition system architecture supports connections to remote sites using TCP/IP (communication servers) and dial-up modems.



EntraPass™ Special Edition

Easy to install and to use, EntraPass Special Edition provides single workstation access control you can trust.

System Features

- E-mailing Reports Capability
- Accommodates an Unlimited Number of Users
- Controls up to 128 Doors
- Express Setup
- Multilingual Operation
- Elevator Control
- Integrated Badging
- Remote Site Management
- Integrates Easily with External Alarm Systems
- Visual Diagnostics
- Automatic Backup
- Time & Attendance Reporting

Computer Requirements

- Minimum processorPentium III 800 MHz
- Minimum RAM recommended128MB
- Minimum free hard disk space4GB
- Minimum screen resolution and video card memory800 x 600 (256 colors)
- Operating system compatibility.....Windows 98/XP/NT/2000

Ordering Information

Software Package

E-SPE-EN: License for EntraPass Special Edition software (English version) includes elevator control, integrated badging, remote site management, English reference manual and CBLK-10 cable kit.

E-SPE-SP: Same as E-SPE-EN with Spanish reference manual

E-SPE-FR: Same as E-SPE-EN with French reference manual

E-SPE-MAN-EN: English reference manual

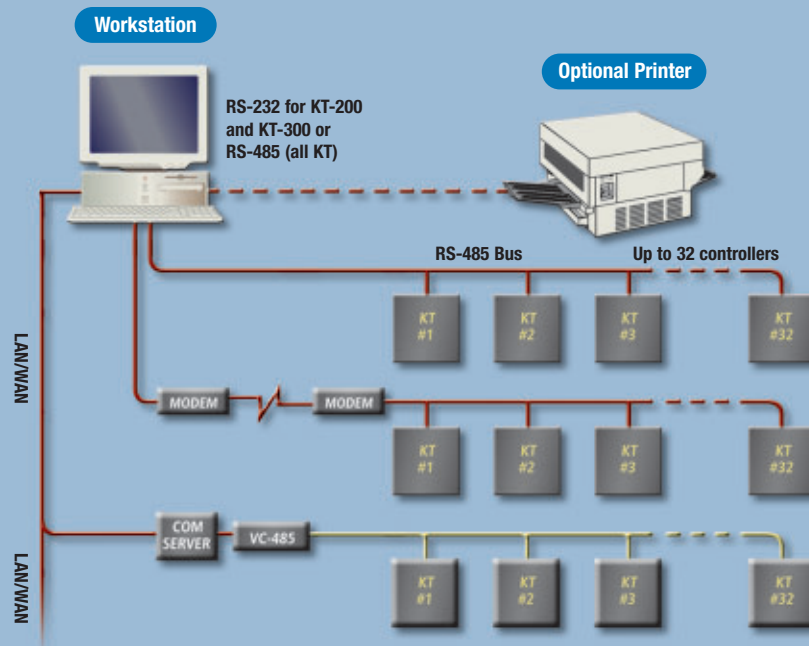
E-SPE-MAN-SP: Spanish reference manual

E-SPE-MAN-FR: French reference manual

System Capacities

- CardsUnlimited
- Cards per controller in standalone mode6,000 (KT-100)
.....3,000 (KT-200)
.....8,000 (KT-300/128K)
.....56,000 (KT-300/512K)
- Card families or site codesUnlimited
- Number of sitesUp to 64
(Max. 64 controllers)
- Door controllers per site32
- Card readers/keypads128 per system
- Monitored points (input)512 per site
- Card user access levels250 per site
- Access level combinationsUnlimited
- Schedules of 4 time zones each100
- Holidays366 per system
- Holiday types4
- System operator passwordsUnlimited
- Operator security levelsUnlimited
- Concurrent operator languages2
- Number of printers1 log printer
.....1 report printer

System Architecture



Converter:

VC-485: RS-232 to RS-485
USB-485: USB to RS-485

- **MAXIMUM: 64** controllers per system
- **MAXIMUM: 32** controllers per loop